

Automotive Engineering

4. Software Applications

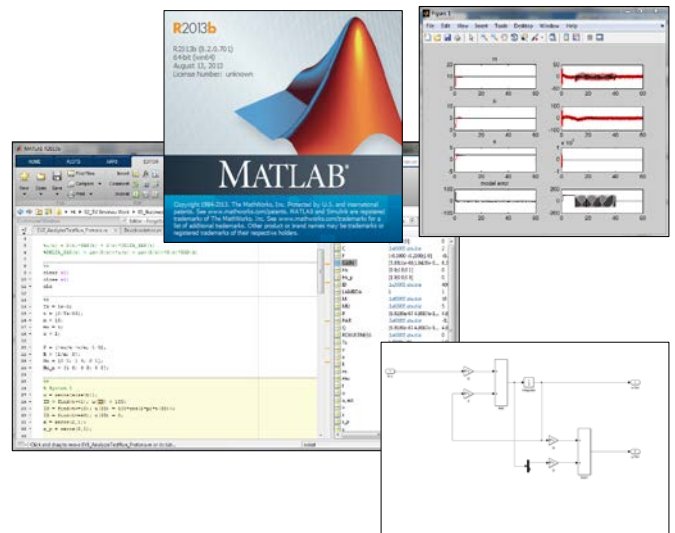


MATLAB/Simulink

Computer-algebraic solver for differential equations

Application:

- Data collection and data analysis
- Rapid Control prototyping and optimization
- Prototypical software development
- Statistics, signal and image processing
- (Co) Simulation



InMotion

Mobile real-time simulation platform with multivalent interfaces:

- Interfaces to MATLAB / Simulink, C-Code
- Communication interfaces: UDP / IP, TCP / IP, CAN, FlexRay, USB
- Application: Complete vehicle simulation (IPG CarMaker) for the representation of complex test scenarios through real-time networking

