



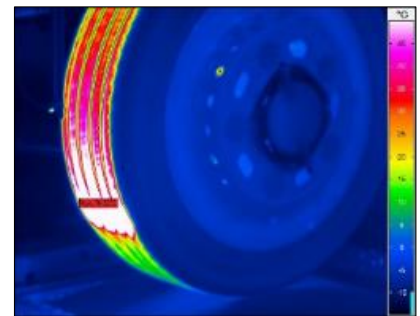
### Temperature Measurement

#### Thermography Camera InfraTec ImageIR 8300

Detector format: (640 x 512) Infrared-Pixel  
 Temperature resolution: 20 mK  
 Spectral range: MWIR, (2,0 ... 5,7)  $\mu\text{m}$   
 Frame rate: Full image: 355 Hz  
 Half image: 670 Hz  
 Quarter imager: 1.200 Hz  
 Split image-line-mode: 5.000 Hz  
 Measurement accuracy: +/- 1 K or +/- 1 %  
 Calibration: 10 up to 850 ° C



Source: InfraTec



#### Free-Sense HAT cRIO-9082

- Intel Core i7, 2GB RAM, 32 GB
- LabView Real-Time
- Maximum number of measuring cards: 8

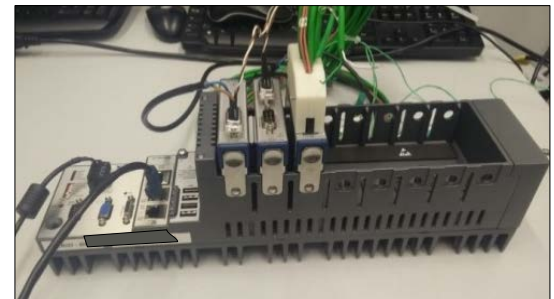
#### Temperature Measuring Cards

NI 9213 high speed module:

- 16 channels
- Maximum sample rate 75 S/s
- Supports standard thermo-sensor types (J, K, S...)

NI 9214 precision module:

- 16 channels
- Measurement accuracy up to 0,45 °C
- Supports standard thermo-sensor types (J, K, S...)



Source: National Instruments